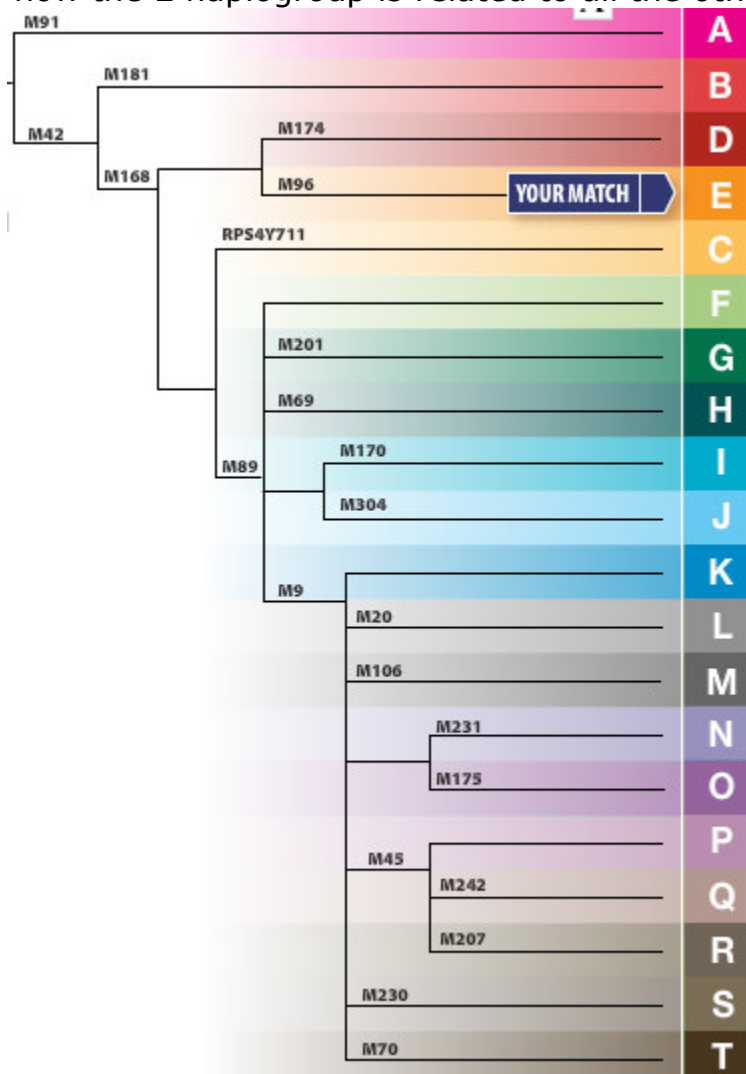


Y-chromosome Haplogroup for my Grandson Caio Araujo-Roper

L. David Roper
<http://arts.bev.net/RoperLDavid/>

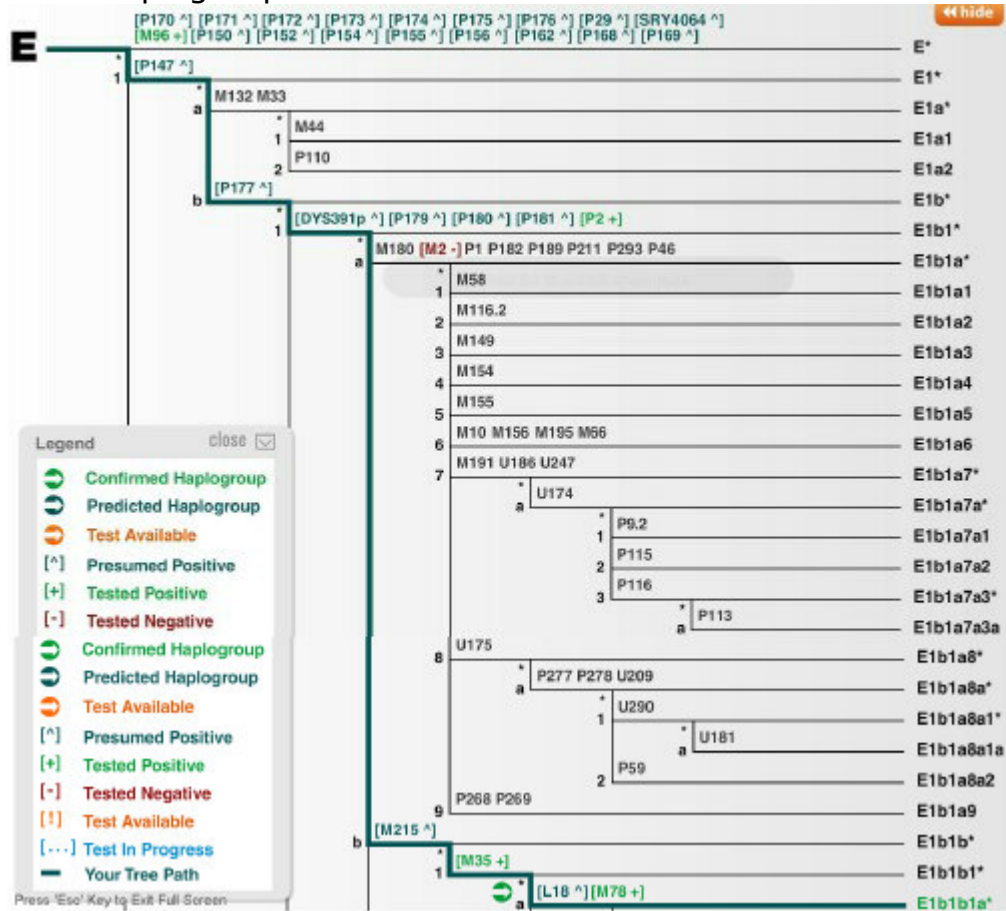
Here are some pictures that show information about his Y-chromosome haplogroup E1b1b1a:

This one shows how the E haplogroup is related to all the others:



I am in R (R1b1b2a1a) haplogroup, in which are about 78% of Europeans. He is in one of the oldest haplogroups and I am in one of the youngest. (A is the oldest.)

Here is the E haplogroup further divided:

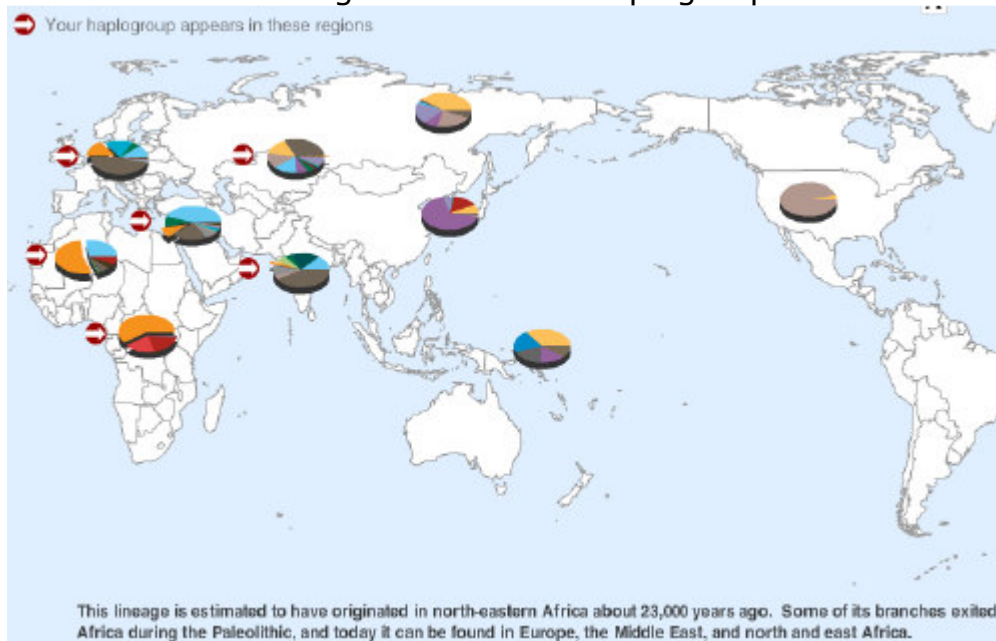


Follow the green line for his branch. I have ordered tests to further refine his haplogroup.

Here is the migration pattern for his E1b1 haplogroup.



This shows locations in orange for his E1b1 haplogroup now:



Notice the large fraction in the South Pacific where he is now (Islands of Tonga).

His male-line ancestors probably migrated up into Portugal and from there on to Brazil. Less likely is that they migrated from North Africa to Brazil.