

# National Drive Electric Week 2018

Blacksburg Virginia (Corporate Research Center)



## Tesla Model 3 LR

~~\$35,000 (ST)~~ -> \$44,000 (LR)  
\$7,500 federal tax credit

Battery: 50-kWh (ST); 75-kWh (LR)  
Electric motor: 192-kW = 258-hp  
126 MPGe, Range: 220 (ST); 310 miles (LR)  
15" landscape screen  
Autonomous hardware equipped  
Battery warranty: 8-years  
100,000-miles (ST); 120,000-miles (LR)

0-30 mph in 2.4-sec  
0-60 mph in 5.6-sec (ST); 4.8-sec (LR)  
1-pedal driving











- 1 Tesla Model S RWD 2013
- 1 Tesla Model S AWD 2017
- 1 Tesla Model 3 Long Range RWD
- 2 Chevrolet Bolt EVs (2017 & 2018)
- 1 2018 Nissan LEAF SV
- 1 Toyota Prius Prime 2017
- 1 Chevrolet Volt 2017
- 1 Chevrolet Spark EV

We concentrated on BEVs with range over 150 miles. That range is necessary for often round trips from Blacksburg VA to Roanoke VA (90 miles) being comfortable.

The estimated 30 people who came to view the cars and talk to the owners showed high interest in the BEVs, asking many questions.

# National Drive Electric Week 2018

## Blacksburg Virginia BEV Show

---

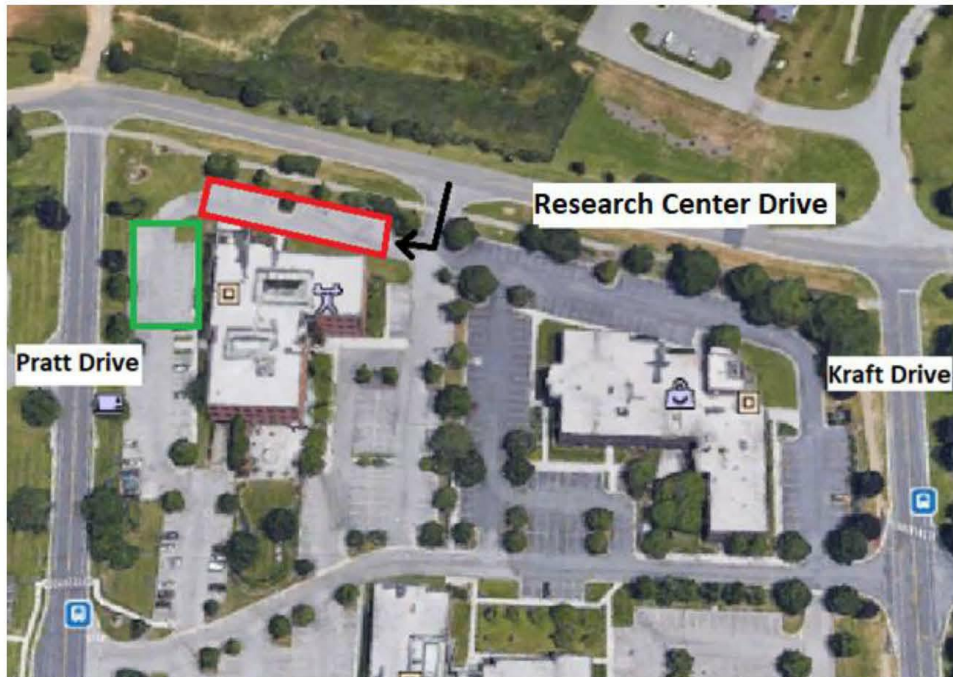
Blacksburg Virginia Battery-Electric-Vehicles Show

1715 Pratt Drive, Blacksburg Virginia

Sunday 9 September 2-5 PM

BEVs with range  $\geq$  150 miles: Tesla, Chevrolet, 2018 Nissan

(150 miles range is chosen to make possible comfortable round trips to Roanoke.)



All cars enter at the black arrow.

BEVs park in the **green rectangle**.

Cars of viewers park in the **red area**.

A special THANK YOU to Joe Meredith and Pat Morris of the Virginia Tech Corporate Research Center for providing the parking lot for the BEV event!

Organizer: L. David Roper, [ROPERLD@VT.EDU](mailto:ROPERLD@VT.EDU), <http://www.roperld.com/personal/roperldavid.htm>